



النافع للصناعات المعدنية
ALNAFIE METAL INDUSTRIES

**FENCING
SYSTEMS**
CATALOG



Overview

Al Nafie Metal industries Co. Ltd. (NMI) is one of the Al Nafie steel affiliate companies which is established in 1979, having a new metal service center factory located in Saudi Arabia, Jeddah district as a downstream service facility to further process fences (ASWAR) security systems, flat coil, reinforcement rebar, rebar in coil and wire rod, etc.*. Al Nafie Metal Industries Company with all related services is located on the west side of the Al-Khumrah area Kingdom of Saudi Arabia. NMI covers an area of approximately 134,000 m² with a vision of future planned expansion programs, to serve the requirements of numerous planned and ongoing construction projects in the west coast region, as well as local and international markets.



OUR VISION

To be prominent perimeter and physical security systems manufacturer locally with global standards in Kingdom of Saudi Arabia and extend to GCC countries.



OUR MISSION

To provide innovative and technological advanced products and services to our clients to prevent and protect any threats to their assets and people.



ETHICS & VALUES

To develop an effective management that stresses productivity, perpetual development of the organization, and instilling work ethics in all personnel.

To build value for the organization to become unique and distinct. To remain focused on controlled organizational growth and recognizing those who contribute to this growth.

PRODUCTS



**CHAIN LINK
FENCE FABRIC**



GATES



**CRASH-RATED
CABLE FENCE**



**WELDED MESH
FENCE SYSTEM**



**GUARD RAIL
BARRIERS**

FIELD OF WORK

In fences and barbed wire tech factory we are producing high industrial fences, residential, expressway, and agricultural fences.



**OIL AND
GAS FIELD**



**ALL POWER AND
ENERGY PLANTS**



**RAILWAY
SIDE FENCES**



**COUNTRY
BORDERS**



**ELECTRICAL
PROJECTS**



**ROAD
FENCING**

Chain link fence fabric

Variety in the application and uses.

Technical specification for chain link fence

- **Chain link:** Galvanized or PVC coated.
- **Wire size:** 2.0 mm, 3.0mm, 3.75mm, 4.0mm.
- **Galvanized:** Class I and II as per ASTM A392
- **PVC Coated:** 2.5/3.55mm, 3.0/4.0mm, 3.55/4.75mm, 3.76/4.88mm.
- **Extruded or Fusion bonded Finish:** 3.7/4.16mm, 4.0/4.4mm
- **Pitch size:** (50X50, 60X60, 70X70) mm diamond pattern.
- **Height of Fabric:** from 0.5 meters to a maximum height of 4 meters.
- **Roll size (Length):** 10m to 25m depending on request.
- **Fence fittings:** Complete fittings, either galvanized or PVC-coated.
- **Barbed wire:** Galvanized or PVC- coated, high security galvanized.
- **Barded tape:** Razor wire in coils form.
- **Concertina:** Razor tape stainless steel & galvanized.
- **Post standard:** 2", 2.5", 3", 4" Sch40/sch80 high tensile





GATES

All gates shall be of the swing type, complete with the following components:

- a) 48mm O.D. steel pipe. Schedule 40, ASTM A53 as the framing material. B) Welded or bolted construction.
- c) 10mm diameter adjustable diagonal tension rods.
- d) 50mm mesh, 3.75mm diameter diamond link, vinyl-clad galvanized as specified on the Purchase Order.
- e) Gate hinges: gate shall be able to swing 90 degree either way from closed position.
- f) Fittings for 35mm diameter rod.
- g) Lock keeper and guide: All gates shall be equipped with attachments from padlocking. The padlock to be accessible from both sides of the gate.
- h) 35mm diameter plunger rod for each gate leaf; as an alternative to a single plunger rod.
- i) Plunger rod receiver and open-gate holders.
- j) Where required, gate frame extensions shall extend 300mm above gate frame.
- k) Where gate widths exceeds 1200mm in width, additional vertical framing members shall be added connecting the top and bottom horizontal framing members.
The panel shall be of equal size and not be less than 900mm or greater than 1550mm in width.

GATES

This type of gates is designed both manual or motorized in different design and different sizes.

We are manufacturing all sliding gates in all requested design.



GUARD RAIL BARRIERS

This system is specially designed to protect cars and trucks from leaping and stepping of the track.

This system is designed as line post attached with strong steel beam.





CRASH RATED CABLE FENCE

This system is designed to prevent cars and any equipment to cross over in any restricted area Very strong.

Consists of line post and groved steel beam with embedded steel cable with special specification.

PORTABLE FENCE SYSTEM

When you need high-quality welded mesh fencing, the ever-popular Exempla™ profiled panel system offers not only an aesthetically pleasing fencing solution but also provides a robust first line of defense for public buildings, and schools, car parks, and commercial fencing projects. Designed for quick and simple installation, Exempla™ features profiled rigid welded mesh fencing panels securely fastened to 60 x 40mm RHS steel posts and held in place by our unique hidden fixing system, SafeTfix™; making it effortlessly easy to step panels up or down a slope. Profiled for extra strength, panels are manufactured from 5mm galvanized steel wires which are welded at each cross-over. Finished with polyester powder coating in either normal or marine grade you can be confident your fencing is well protected from the elements. Available in a full spectrum of RAL colors, plus in a wide range of heights up to 3m, we can tailor-make Exempla™ fencing to fit your project perfectly.



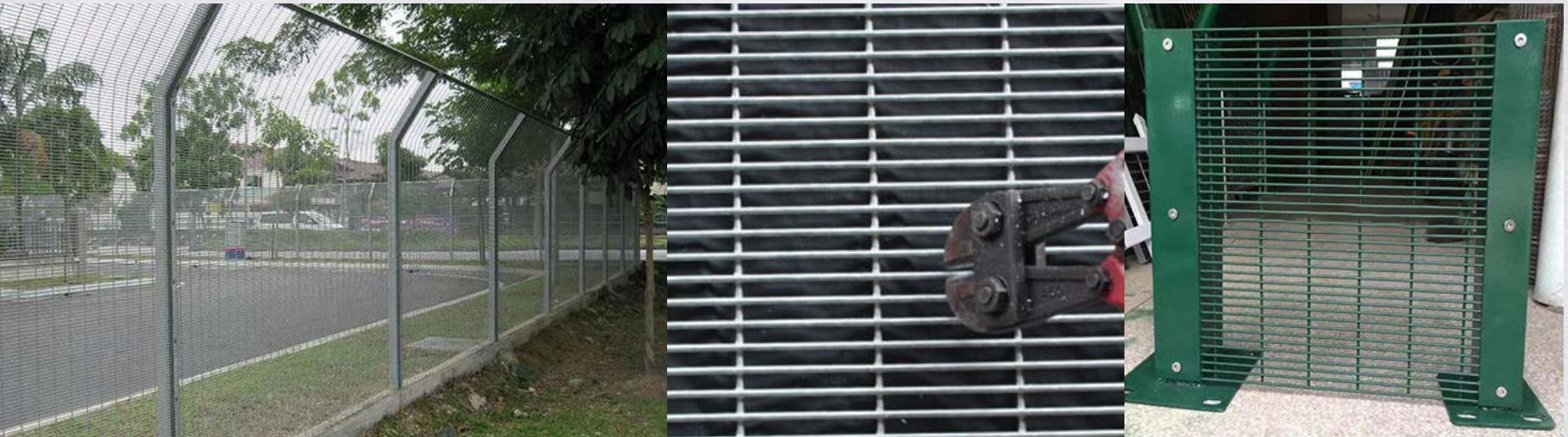
ANTI-CLIMB FENCE

Features & Benefits

- Elegance, Excellent Vision through fence
- Durability.Maintenance free.Extremely strong&rigid structural
- Resistant/Resistance to cutting by light weight hand tools
- Anti-climb design/anti rust.Easy Installation

Applications

- Prisons.Military base, Power plants, Oil refineries, Airport terminal
- Telecommunication&utilities substations,Financial centre&Complex
- Car park,Landscaping,Factories.wirehouses and industrial sites
- Supermarkets and hypermarkets.playgrounds and amusement parks
- Gated communities.apartments and condominiums



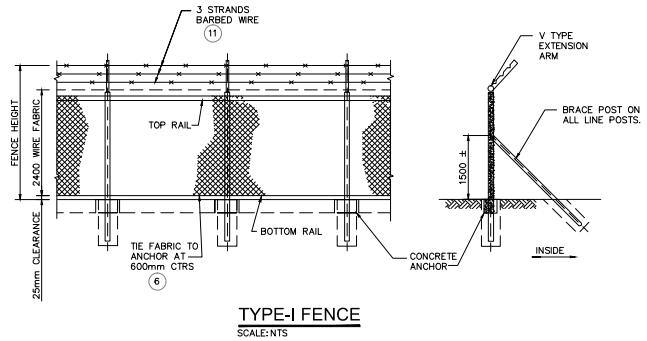
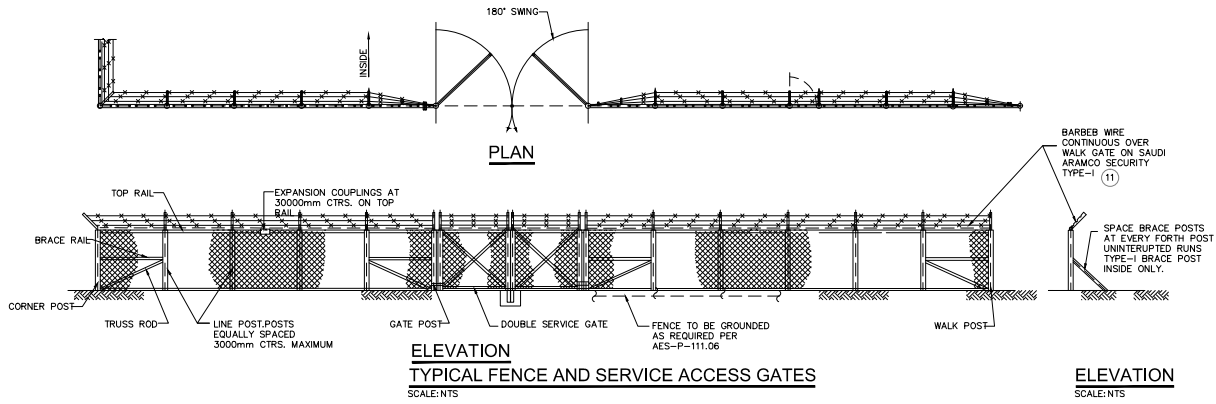
Fence Model	Height of fence (mm)	Width of fence (mm)	Steel Wire Diameter (mm)	Mesh Spacing (mm)	Post Spec
Anti-Climb Fence	1200-2500	2000-3100	3.0-5.0	12.5*75 12.6*76.2 25*75	60*60*2.0mm; 70*70*2.0mm; 60*80*2.0mm; (SHS Post C/W Flat Bar 40*5.0mm thk & Bolt & Nut)

Surface Treatment: Galvanized and Electrostatic polyester Powder coated or hot dipped galvanized after welded, Any size as details requirement.

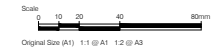
CROWD BARRIER

Frame	Infilled Pipe	Foot	Surface Treatment	Panel Width	Height
032x1.5mm 042x1.5mm 048x1.5mm	012x0.7mm 014x1.0mm 016x1.0mm 020x1.2mm 025x1.2mm	Welded on the frame or removable	Galvanized and Electrostatic polyester power coated or hot dipped galvanized	2.00m 2.50m	1100mm 1250mm 1500mm





Prepared for the Jazan Economic City Port and Infrastructure (JECPI) by AECOM Arabia Ltd. The information contained in this document is solely for the use of the Jazan Economic City Port and Infrastructure for the purposes for which it has been prepared. The Jazan Economic City Port and Infrastructure undertakes no duty for or accepts any responsibility to any third party who may rely on this document.
© Copyright 2013 Jazan Economic City Port and Infrastructure. All Rights Reserved. No portion of this document may be used, copied or reproduced, electronically or otherwise, or distributed without the express written consent of the Jazan Economic City Port and Infrastructure.



NOTES

1. FENCING SHALL CONFORM TO SPEC. 12-AMSS-021 OR 12-AMSS-022.
2. DIRECT CHARGE PURCHASE REQUISITIONS FOR FENCING PARTS SHALL INCLUDE ALL REQUIRED BOLTS.
3. TERMINAL POSTS (CORNER, END, GATE OR TENSION) SHALL BE INSTALLED AT THE BEGINNING AND END AND AT A MINIMUM OF 90 METERS INTERVALS OF FENCE FABRIC AND AT CHANGES VERTICAL AND HORIZONTAL ALIGNMENTS EXCEEDING 22.5° DEFLECTION ANGLE. TERMINAL POSTS SHALL BE BRACED IN THE PLANE OF FENCING TO THE ADJACENT LINE POSTS.
4. ALL DIMENSIONS ARE IN MILLIMETERS.
5. REPAIR FENCE AT LOCATION NEEDED AND AS INSTRUCTED BY THE ENGINEER.
6. REPLACE FABRIC AT LOCATION WHERE IT IS DAMAGED OR MISSING
7. ADD BRACE POST AT EVERY 4 POST
8. ADD TOP AND BOTTOM RAIL ALONG THE FENCE
9. TIE FABRIC TO ANCHOR AT 600mm CTRS FOR MAIN GATES SEE ADDITIONAL PLANS
11. ADD BARBED WIRE AT LOCATION MISSING. A TOTAL OF WIRE SHALL BE INSTALLED AT V TYPE EXTENSION ARM.

NO.	DATE	DESCRIPTION	BY	CHK	APP



JAZAN ECONOMIC CITY PORT & INFRASTRUCTURE

STRUCTURAL FENCE
STANDARD DETAIL (1 OF 4)

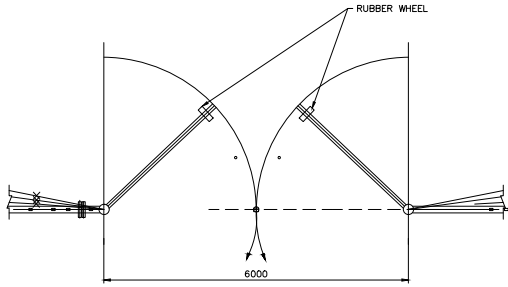
DETAILS ADOPTED FROM ARAMCO STANDARD DETAILS AB-036677-001-02	SHEET NO. SD-5 001 014	DATE 14 OF 17	REV. 0
--	---------------------------	------------------	-----------

DWG: 21_MIDRIBS_FINAL_DRAWING_STRUCTUREL FENCING SD 001 014.dwg
 DATE: Jan 20, 2014 8:37am
 LITER: 14236
 MODEL: 21midribss-struct-fenc-001.rvt

Prepared for the Jazan Economic City Port and Infrastructure (JECPI) by AECOM Arabia Ltd. The information contained in this document is solely for the use of the Jazan Economic City Port and Infrastructure for the purpose for which it has been prepared. The Jazan Economic City Port and Infrastructure undertakes no duty for or accepts any responsibility to any third party who may rely on this document.
 © Copyright 2013 Jazan Economic City Port and Infrastructure. All Rights Reserved. No portion of this document may be used, copied or reproduced, electronically or otherwise, or distributed without the express written consent of the Jazan Economic City Port and Infrastructure.

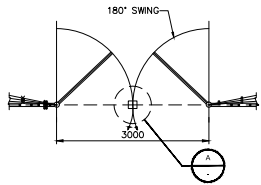
NOTES

1. SERVICE ACCESS GATE SHALL BE INSTALLED WITHIN THE EXISTING FENCE.
2. MAXIMUM SPACING BETWEEN SERVICE ACCESS GATES SHALL BE AT A MAXIMUM OF 2.0KM
3. LARGE ACCESS ENTRY GATES ARE NOT PART OF THIS CONTRACT.



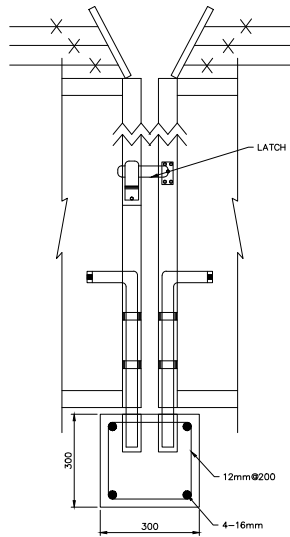
HEAVY AND WIDE TRUCKS SWING ACCESS GATE

SCALE: NTS



SERVICE ACCESS GATE

SCALE: NTS



DETAIL - A

SCALE: NTS

△					
△					
△					
△					
△					
REV.	DATE	DESCRIPTION	BY	CHK	APP

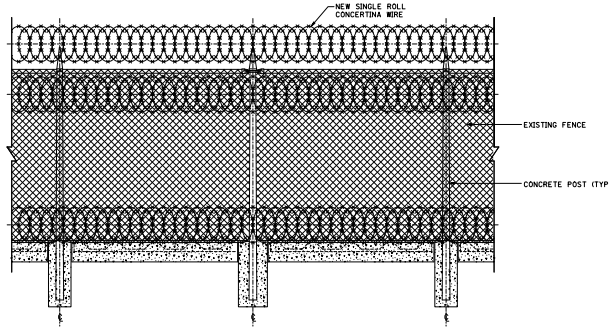
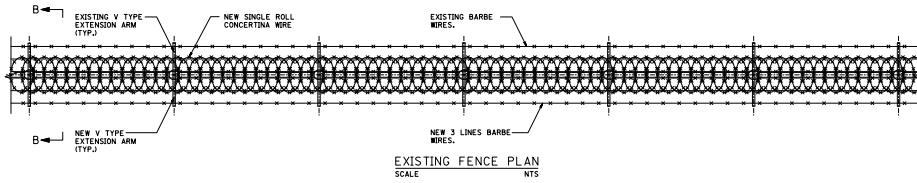


JAZAN ECONOMIC CITY PORT & INFRASTRUCTURE

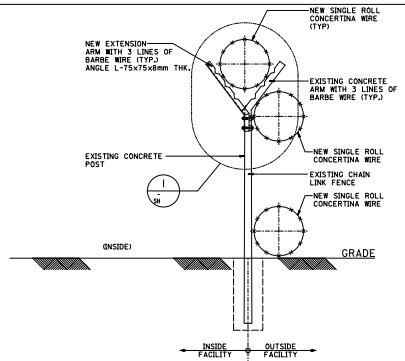
FENCE STRUCTURAL
STANDARD DETAIL

DRAWING NUMBER	SHEET	REV.
SD-5 001 016	16 OF 17	0

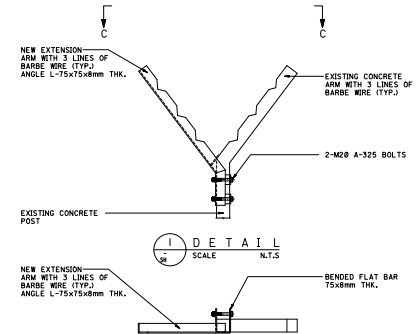
DWG: Z:\WORKING FILES\TEMP_DRAWING\CONSTRUCTION PLAN\SD-5 001 016.dwg USER: mshahine
 DATE: Jan 22, 2014 8:33am CAPP: CAPP - Jan 2013.dwg
 Scale: Aramco-Quality-Topic.dwg Scale: Aramco-Quality-Topic.dwg
 Scale: Aramco-Quality-Topic.dwg Scale: Aramco-Quality-Topic.dwg



A
SCALE NTS



B
SCALE NTS



I
SCALE NTS

C
SCALE NTS

- NOTES:**
1. FOR GENERAL NOTES, LEGEND AND ABBREVIATIONS REFER TO DWG. NO. BA-S1802.
 2. ALL DIMENSIONS ARE IN MILLIMETERS UNLESS INDICATED OTHERWISE.
 3. THIS IS A CONCEPTUAL DRAWING INTENDED TO PROVIDE APPROXIMATE INFORMATION OF THE INTENDED PROJECT WHICH SHALL BE FURTHER DEVELOPED WITH SELECTED DESIGN CONTRACTOR CORRECTNESS AND ACCURACY SHALL BE VERIFIED DURING DETAILED DESIGN.

REFERENCE DRAWINGS

GEN. CONTROL FOR: (S-180214-0001)	(S-180214-0001)
GENERAL NOTES-STRUCTURAL WORKS	BA-S1801

REVISION VALIDATION

THIS REVISION NO. 0 IS COVERED FOR ALL APPROVAL AND CERTIFICATION REQUIREMENTS PER SAUDI ARABIAN DRAWING CONVENTION CERTIFICATE NO. 18-08614-0001-0001

REVISION NO.	DATE	BY	DESCRIPTION	OTHER
0				

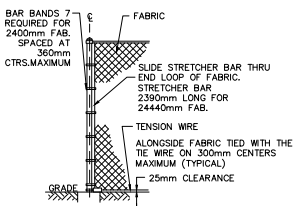
DESIGNED BY: SAUDI ARABIAN OIL COMPANY
 DRAWN BY: SAUDI ARABIAN OIL COMPANY
 CHECKED BY: SAUDI ARABIAN OIL COMPANY
 APPROVED BY: SAUDI ARABIAN OIL COMPANY

SAUDI ARABIAN OIL COMPANY
 SECURITY FENCE-DETAIL FOR V-SHAPE SUPPORT POINT
 EXISTING FENCE UPGRADE

SHAYBAH	SAUDI ARABIA
PROJECT NO. B29	DRAWING NUMBER BA-STR038

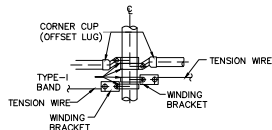
RESTRICTED SAUDI ARABIAN OIL COMPANY [VECTOR] 4/2001-01

THIS DRAWING AND THE INFORMATION CONTAINED HEREIN ARE THE SOLE PROPERTY OF SAUDI ARABIAN OIL COMPANY. NO REPRODUCTION IN FULL OR IN PART, SHALL BE OBTAINED FROM THIS DRAWING WITHOUT THE WRITTEN CONSENT OF SAUDI ARABIAN OIL COMPANY.

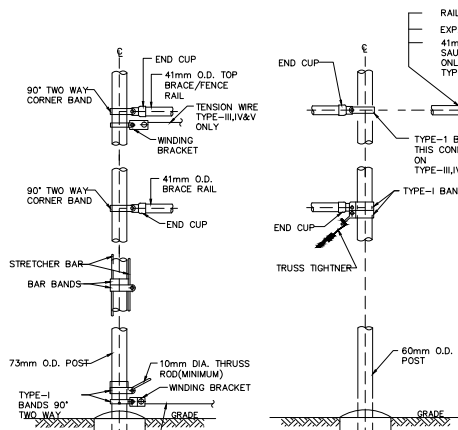


CORNER, END AND GATE POSTS

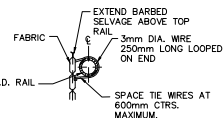
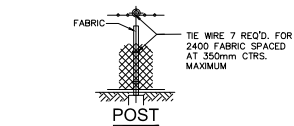
DETAILS FOR ATTACHING FENCE FABRIC



ADJUSTABLE CORNER CLAMP

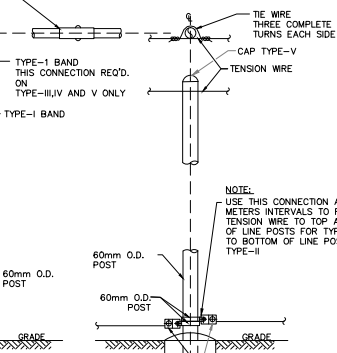


CORNER POSTS



TOP BRACE/FENCE RAIL INTERMEDIATE BRACE RAIL

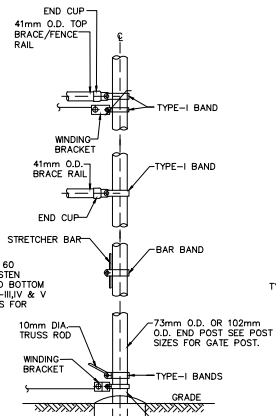
RAIL COUPLING AT JOINTS AND EXPANSION COUPLING AT 30 METERS CTRS. 41mm O.D. CONTINUOUS TOP RAIL ON SAUDI ARAMCO SECURITY AND TYPE-II ONLY TENSION WIRE REQUIRED ON TYPES-III,IV AND V



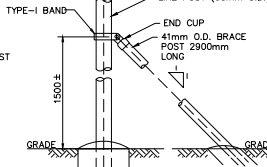
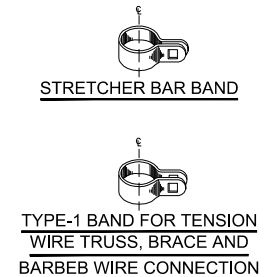
BRACING LINE POST

POST ASSEMBLY

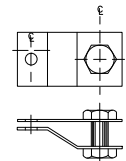
EXCEPT TOP AND FOOTING



END AND GATE POSTS



BRACE POSTS



WINDING BRACKET



90° TWO WAYBAND FOR CORNER POST, TENSION WIRE AND BRACE CONNECTIONS



STRETCHER BAR BAND



TYPE-1 BAND FOR TENSION WIRE TRUSS, BRACE AND BARBED WIRE CONNECTION

Prepared for the Jazan Economic City Port and Infrastructure (JECPI) by ADCOM Arabia Ltd. The information contained in this document is solely for the use of the Jazan Economic City Port and Infrastructure for the purpose for which it has been prepared. The Saudi Economic City Port and Infrastructure undertakes no liability for any errors or omissions, electronically or otherwise, or distributed without the express written consent of the Jazan Economic City Port and Infrastructure.



NOTES

- ON LINE POST HOLD BARBED WIRE IN PLACE WITH LOCK WIRE OR LUGS.
- ASSEMBLE CLAMPS AND BANDS WITH 10x35mm LG. CARTRIDGE BOLTS WITH BOLT HEAD ON OUTWARD SIDE OF FENCE.
- TIE FABRIC TO TENSION WIRE AT 300mm INTERVALS WITH THE WIRE.
- DIRECT CHARGE PURCHASE REQUESTIONS FOR FENCING PARTS SHALL INCLUDE ALL REQ'D BOLTS.
- GALVANIZED FABRIC AND HARDWARE SHALL BE USED FOR ALL INLAND LOCATIONS. VINYL-CLAD FABRIC, TIE WIRE, BARBED WIRE, TENSION WIRE AND GATE IN FILLING SHALL BE SUBSTITUTED AT LOCATIONS WITHIN ONE AND A HALF KILOMETERS OF THE SEA.
- ENCRICLED CODE NUMBERS REFER TO THE LISTS OF MATERIAL REFERENCED BELOW.
- ALL DIMENSIONS ARE IN MILLIMETER UNLESS NOTED OTHERWISE.

FENCE DATA

DESCRIPTION	SAUDI ARAMCO SECURITY	TYPES
FABRIC WIDTH	2400	2400
BARBED WIRE	YES	YES
TOTAL FENCE HEIGHT (WITH 250mm BOTTOM CLEARANCE)	2775	2775

POST SIZES

DESCRIPTION	OUTSIDE DIAMETER	NOM. PIPE SIZE
CORNER AND END POST	73mm	68mm SCH 40
LINE POST	60mm	50mm SCH 40
BRACE POST	41mm	68mm SCH 40
GATE POST FOR DOUBLE GATE 1.8 METERS WIDE	73mm	58mm SCH 40
GATE POST FOR DOUBLE GATE 4 & 8 METERS WIDE	102mm	89mm SCH 40

NO.	DATE	ISSUED FOR NO.	BY	CHECKED BY	ON

السوق الاقتصادية لجازان
Saudi Aramco

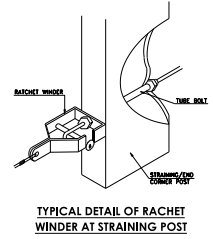
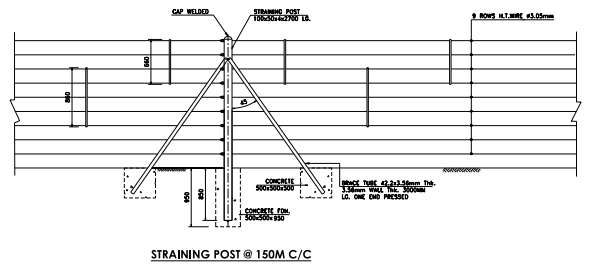
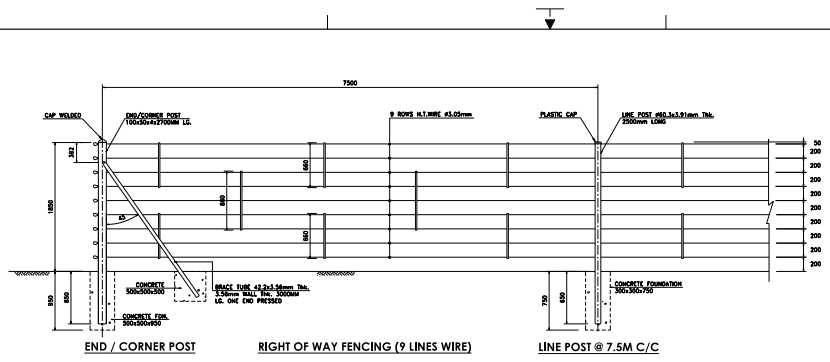
FENCE STRUCTURAL STANDARD DETAIL (4 OF 4)

PROJECT NUMBER	SD-5 001 017	REV	0
SHEET		17 OF 17	

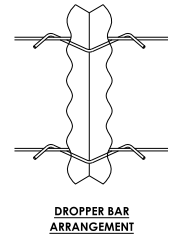
DETAILS ADOPED FROM ARAMCO STANDARD DETAILS AA-036678-001-01

DWG: 31-10-2013-0153-DWG-CORNER AND GATE POSTS (4 OF 4) 01/07/2013 10:58:54 AM
 DATE: 01/07/2013 10:58:54 AM
 USER: SAUDIAA
 FILE: C:\Users\saudiaa\Desktop\31-10-2013-0153-DWG-CORNER AND GATE POSTS (4 OF 4) 01/07/2013 10:58:54 AM
 SHEET: 17 OF 17

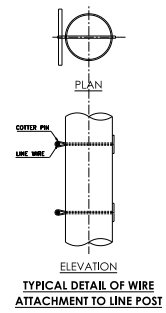
ROAD FENCE



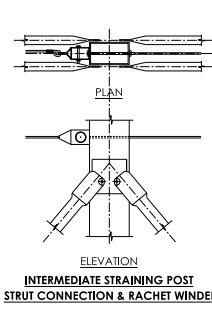
TYPICAL DETAIL OF RATCHET WINDER AT STRAINING POST



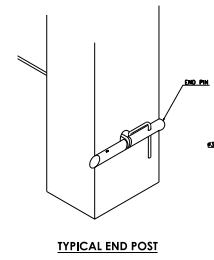
DROPPER BAR ARRANGEMENT



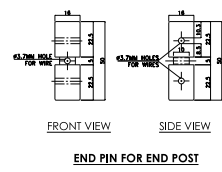
TYPICAL DETAIL OF WIRE ATTACHMENT TO LINE POST



INTERMEDIATE STRAINING POST STRUT CONNECTION & RATCHET WINDER



TYPICAL END POST



END PIN FOR END POST

- NOTES:**
1. ALL DIMENSIONS AND ELEVATION ARE IN METERS UNLESS OTHERWISE NOTED.
 2. ALL RESPONSIBILITIES FOR CONCRETE FOUNDATIONS ARE WITH THE CONTRACTOR.
 3. ALL WIRE, POST FIXTURES AND FITTINGS TO BE GALVANIZED.
 4. ALL CONCRETE TO BE CLASS B 10/15 AS APPROVED.
 5. WIRE TO BE 3.05MM DIA (1/8 GAUGE) GALVANIZED TENSILE STRENGTH 1058 MPa GALVANIZED TO BS443.

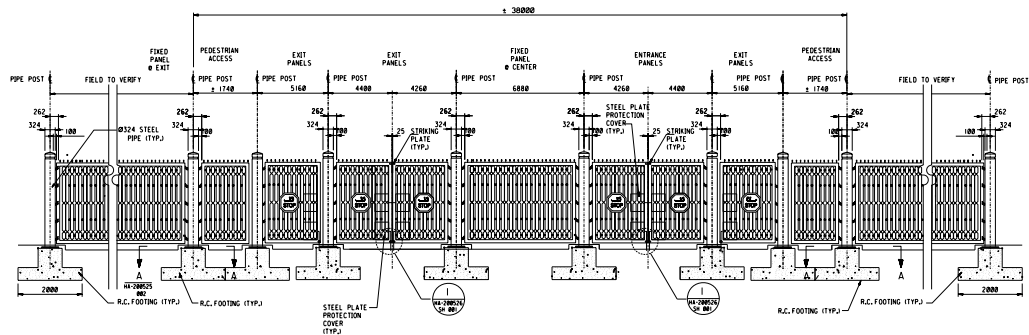
SCALE: _____

REVISION VALIDATION	
THIS REVISION NO. IS CONTROLLED FOR ALL APPROVALS AND CERTIFICATION REQUIREMENTS BY SAUDI ARABIAN OIL COMPANY PROJECT NO. _____	OTHER _____
DESIGNER: SAUDI ARABIAN OIL COMPANY PROJECT NO. _____	DATE: _____
REVISIONS: REVISION DESCRIPTION: _____	ISSUED FOR: DECISION: _____
DATE: 10-03-2003	THIS DRAWING IS NOT TO BE USED FOR CONSTRUCTION UNLESS OTHERWISE APPROVED
SAUDI ARABIAN OIL COMPANY	
FENCE DETAILS	
FENCE AROUND PLANT AND ACCESS ROADS	
TEMPORARY CONSTRUCTION FACILITIES	
PLANT NO. _____	REV. NO. _____
S DD-817030	002 A
RESTRICTED	

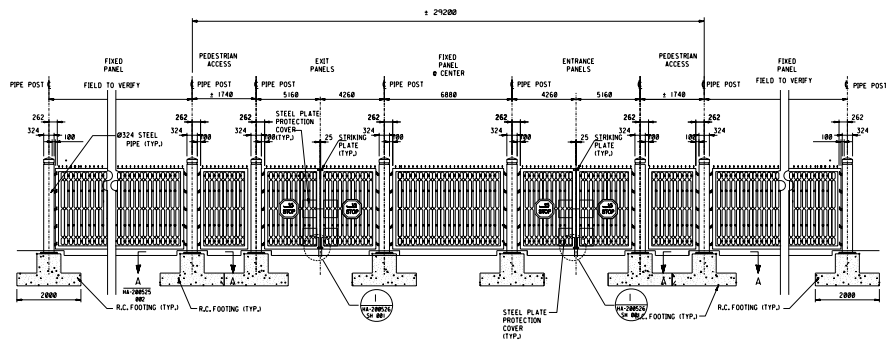
THIS DRAWING AND THE INFORMATION CONTAINED HEREIN ARE THE SOLE PROPERTY OF SAUDI ARABIAN OIL COMPANY. NO REPRODUCTION IN FULL OR IN PART, SHALL BE OBTAINED FROM THIS DRAWING WITHOUT THE WRITTEN CONSENT OF SAUDI ARABIAN OIL COMPANY.

DECORATIVE METAL FENCE & GATE

DRAWING



MAIN GATEHOUSE FACILITY 5X7M AND 5X11M (6- ROAD LANES)
GATE ELEVATION (LOOKING IN)
SCALE: N.T.S.



MAIN GATEHOUSE FACILITY 4X6M (4- ROAD LANES)
GATE ELEVATION (LOOKING IN)
SCALE: N.T.S.

- NOTES:**
1. ALL DIMENSIONS ARE IN MILLIMETERS AND ELEVATIONS ARE IN METERS UNLESS OTHERWISE NOTED.
 2. CONTRACTOR SHALL MODIFY EXISTING CURB, SIDE WALK, CONCRETE CRASH BARRIER AND OTHER RELATED STRUCTURE IF NECESSARY TO SUIT THE NEW DECORATIVE GATE.
 3. THE CONSTRUCTION CONTRACTOR SHALL PROVIDE DECORATIVE GATES SHOP DRAWING FOR SAUDI ARAMCO REPRESENTATIVE REVIEW AND APPROVAL PRIOR TO FABRICATION.
 4. CONTRACTOR TO VERIFY ACTUAL SITE CONDITION AND DIMENSION PRIOR TO FABRICATION.
 5. FOUNDATION SIZE ARE BASED ON UNLATERED, SPREAD FOOTING WITH ASSUMED NET SAFE BEARING CAPACITY OF 180 KG/CM² AFTER SOIL IMPROVEMENT. CONSTRUCTION CONTRACTOR TO VERIFY / CONFIRM / FINALIZE SIZE OF FOUNDATION BASED ON RECOMMENDED SOIL STUDY BY THEIR GEOTECHNICAL ENGINEERING SUB CONTRACTOR.
 6. FOR LAYOUT AND LOCATION OF DECORATIVE GATE POSTS REFER TO CIVIL SITE DEVELOPMENT PLAN WHEN REQUIRED.
 7. DECORATIVE METAL GATES SHALL OPEN 90°
 8. STOP SIGNS SHALL BE PROVIDED ON BOTH FACES OF THE GATE.
 9. PRIOR TO EXECUTION CONTRACTOR TO COORDINATE WITH SAUDI ARAMCO REPRESENTATIVE FOR FINAL LOCATION OF DECORATIVE GATE.
 10. FOR PAINT COATING SYSTEM, USE APCS-22, AS PER SAES-H-001.
 11. FOR ANCHOR BOLT DETAILS, REFER TO SAUDI ARAMCO STD. DNG. AA-956322-001.
 12. STEEL PIPE POST SHALL BE FILLED WITH CONCRETE.

LEGEND

- ⊖ - CENTER LINE
- C/- - CENTER TO CENTER
- EF - EACH FACE
- sq - SQUARE
- THK. - THICK
- TYP. - TYPICAL
- Ø - DIAMETER
- VERT. - VERTICAL
- R.C. - REINFORCED CONCRETE

REFERENCE DRAWINGS

DWG. CONTROL FOR ERM. NO. W9C156 HD-101516A

Scale: N.T.S.

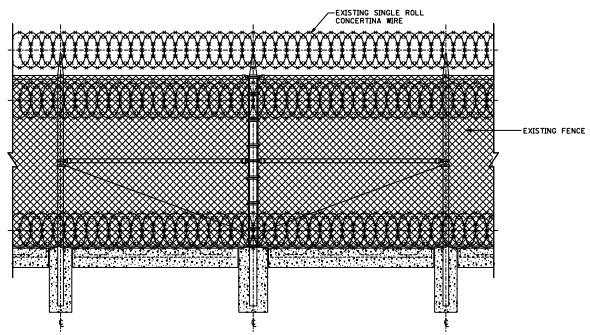
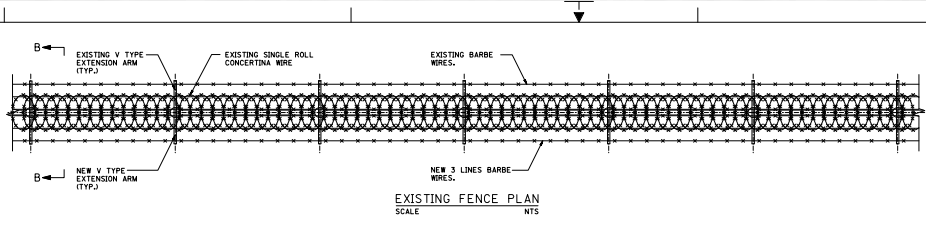
REVISION VALIDATION
 THIS REVISION NO. 001 IS CORRECTED FOR ALL APPROVAL AND CERTIFICATION REQUIREMENTS PER SHEP-234 UNDER COMPLETION OF GATE/POST NO. 10-INDPAPS-0001-001

DESIGN CERTIFICATION
 DESIGNER: [Signature] CHECKED: [Signature] DRAWN: [Signature] OTHER: [Signature]
 REG. NO. 04-77766 REG. NO. 04-77766 REG. NO. 04-77766
 REVISION NO. 001 REVISION REVISION

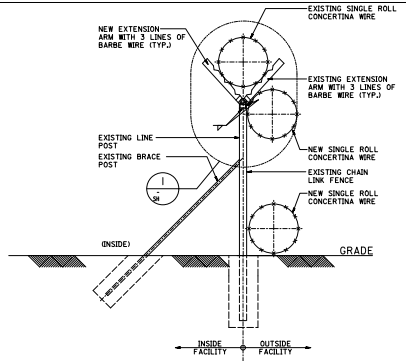
SAUDI ARABIAN OIL COMPANY
 SITE L/O-DECORATIVE METAL GATE | GAT
 GENERAL
 FENCES, GATES & GATEHOUSES

PLANT NO.	DATE	DRAWING NUMBER	SHEET NO.	TOTAL SHEETS
084	0	AA-036026	001	00
RESTRICTED			VECTOR	CA00-01

THIS DRAWING AND THE INFORMATION CONTAINED HEREIN ARE THE SOLE PROPERTY OF SAUDI ARAMCO. NO REPRODUCTION IN FULL OR IN PART, SHALL BE OBTAINED FROM THIS DRAWING WITHOUT THE WRITTEN CONSENT OF SAUDI ARAMCO.



A FENCE SECTION
SCALE NTS



B FENCE CROSS SECTION (GOSP-1, 2 & 3)
SCALE NTS

NOTES:
 1. FOR GENERAL NOTES, LEGEND AND ABBREVIATIONS REFER TO Dwg. No. BA-STR001
 2. ALL DIMENSIONS ARE IN MILLIMETERS UNLESS INDICATED OTHERWISE.
 3. THIS IS A CONCEPTUAL DRAWING INTENDED TO PROVIDE APPROXIMATE INFORMATION OF THE INTENDED PROJECT WHICH SHALL BE FURTHER DEVELOPED WITH SELECTED DESIGN CONTRACTOR-CORRECTNESS AND ACCURACY SHALL BE VERIFIED DURING DETAILED DESIGN.

REFERENCE DRAWINGS	
DWG. CONTROL FOR NO. 10-00614-0001	10-00614-0001
GENERAL NOTES-STRUCTURAL WORKS	BA-STR001

SCALE: NTS	
REVISION VALIDATION	
THE REVISION NO. 0 IS TO CORRECT FOR ALL APPROVAL AND CERTIFICATION REQUIREMENTS FOR SAG-30, UNDER DRAWING COMPLETION CERTIFICATE NO. 10-00614-0001-0001	
DESIGN CERTIFICATION	DESIGNER FOR ALL DRAWINGS
DESIGN APPROVAL	OTHER
ISSUED FOR	ISSUED FOR
REVISED	REVISED
0	ISSUED FOR IRIE SUBMITTAL
10-00614-0001	THIS REVISION IS NOT TO BE USED FOR CONSTRUCTION UNLESS SPECIFICALLY NOTED
SAUDI ARABIAN OIL COMPANY	
SECURITY FENCE-DETAIL FOR V-SHAPE SUPPORT FDN	
EXISTING FENCE UPGRADE-GOSP 1, 2 & 3	
COMMON PLANT	

PLANT NO.	0	DATE	01/01/2013	REV. NO.	0
DRW. NO.	0	DRW. NO.	0	DRW. NO.	0
0	0	0	0	0	0

RESTRICTED

THIS DRAWING AND THE INFORMATION CONTAINED HEREIN ARE THE SOLE PROPERTY OF SAUDI ARAMCO. NO REPRODUCTION IN FULL, OR IN PART, OR IN PART, SHALL BE OBTAINED FROM THIS DRAWING WITHOUT THE WRITTEN CONSENT OF SAUDI ARAMCO.

CERTIFICATIONS



WE ARE APPROVED FROM



vendor No. 10107190



نيوم NEOM



Vendor No. 2006916



FITTINGS

Fencing fittings and accessories are essential elements to building fencing of all kinds. The quality range you will find here at Seyaj will ensure you are well on your way to a secure and long lasting fence build.

Description
2.0"
2.5"
3.0"
4.0"





HEAVY DUTY 73mm LINE POST

Description
2.5" (73mm) X 1.2
2.5" (73mm) X 2.4
2.5" (73mm) X 3.4
2.5" (73mm) X 4



EYE BOLT WITH NUT

Description
10mmX 80mm (H.D.G)
10mmX 100mm (H.D.G)
10mmX 150mm (H.D.G)
10mmX 160mm (H.D.G)



CARRIAGE BOLT & NUT

Description
10mmX 35mm (H.D.G)



SLEEVES GALV

Description
1-1/2" (42mm) X 6"
2" (60mm) X 6"



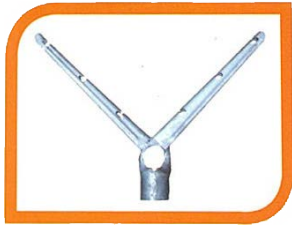
HEX BOLT & NUT / WASHER

Description
8mmX 80mm (H.D.G)
10mmX 100mm (H.D.G)



SINGLE EXTENSION ARMS

Description
Extension arm single
2" (60mm) Extension arm single Heavy Duty
2.5" (73mm)
Extension arm single heavy duty 3" (90mm)
Extension arm single 2" (60mm) with 44mm hole 600mm long



DOUBLE EXTENSION ARMS

Description

Extension arm double
2" (60mm) with 44mm hole 6
600mm long.

Extension arm double 2" (60mm) Extension arm
double Heavy duty 2.5" (73mm) Extension arm
double Heavy duty 3" (90mm)



CUP BRACE OR FENCE RAIL END (H.D.G)

Description

GATE LOCK DEVICE Description:

1 1/2" (inch) 48mm



GATE LOCK DEVICE

Description

1 1/2" (inch) 48 mm



BARBED WIRE GALV

Description

2.5mm X 2mm X 4" X200M rolls

2.5mm X 2mm X 4" X 100M rolls



TRUSS ROD TIGHTENER

Description

Truss rod tightener 8mm thk



END CAP

Description

END CAP 1- 1/2" (48 mm)

END CAP 2" (60 mm)

END CAP 2-1/2" (73 mm)

END CAP 3" (90 mm)

END CAP 3-1/2" (102 mm)

END CAP 4" (114 mm)

END CAP 6" (152 mm)

END CAP 8" (220 mm)



TURN BUCKLE

Description

Turn Buckle m 10 H.D.G Turn
Buckle m 16 H.D.G



GUY WIRE CLPS

Description

1/2" (inch)



THIMBLE GALV

Description

Thimble Galv.
1/2" (inch)



WINDING BRACKET

Description

Winding Bracket (H.D.G)



STRETCHER BAR

Description

Stretcher Bar
20mm X 4mm 2.4 mtr

Stretcher Bar
20 mmX5mm 2.4 mtr



GUY WIRE GALV. STEEL

Description

Dia 12mm X 100 mtr
roll

MACHINERY



CLIENTS

 <p>أرامكو السعودية saudi aramco</p>		 <p>سابك عندلك</p>	 <p>الشركة السعودية للكهرباء Saudi Electricity Company نعمل باتقان من أجلكم</p>	
 <p>نيوم NEOM</p>	 <p>The Red Sea Development Company</p>	 <p>اليمامة ALYAMAMA</p>	 <p>SAIPEM</p>	
 <p>AAA NCC شركة المقاولات الوطنية المحدودة</p>	 <p>وزارة التعليم الجمهورية العربية السعودية</p>	 <p>وزارة الداخلية المملكة العربية السعودية</p>	 <p>عبدالله فؤاد ABDULLA FOUAD — منذ 1948 —</p>	 <p>وزارة الدفاع MINISTRY OF DEFENSE</p>

النافع للصناعات المعدنية
ALNAFIE METAL INDUSTRIES



King Faisal Road, Alsarawat
Dist., Jeddah



+966 9200 06420



aswar@alnafie-indust.com



www.alnafie-indust.com